



Pumpkin Painters

- **Safer than carving
(No knives - No candles!)**
- **Pumpkins last longer**
- **Less mess**
- **Bright colors spiff up your pumpkins**
- **Paint Halloween scenes on your windows**

Made in USA

Non-toxic



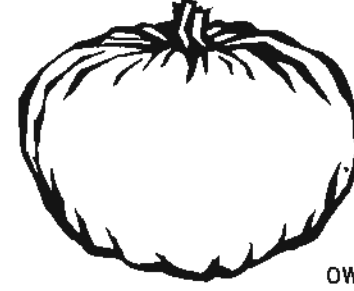
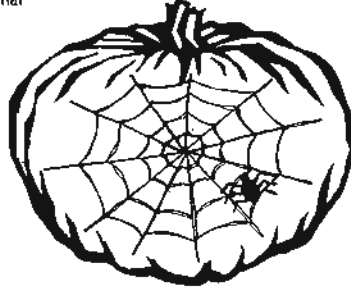
Pumpkin Painters



Witch - Add carrot nose, yarn hair and paper hat



Cat - Add cardboard ears



YOUR OWN IDEAS

YOU WILL NEED:

- Enough space
 - ♦ to paint
 - ♦ for painted pumpkins to dry
- Newspapers to keep area(s) clean
- To clean pumpkins before painting
 - ♦ brush off dirt
 - ♦ rub a damp cloth over surface
 - ♦ make sure pumpkins are dry before painting
- To plan the pumpkin face you want to make
 - ♦ gather other supplies - Optionall yarn, toothpicks, pipe cleaners, scissors, construction paper, glue, googley eyes, ribbons, stickers, etc. Be creative!
- To get the Pumpkin Painter "markers" started:
 - ♦ remove cap, hold marker tip to scratch paper (or part of newspaper)
 - ♦ gently squeeze marker while pushing tip to paper
 - ♦ paint will start to flow - now you are ready to go!

DECORATING TIPS:

- Try to keep marker tips clean:
 - ♦ avoid painting over the top of wet colors (colors will smear and mix!)
 - ♦ can use this to create cool effects
 - ♦ start with lighter colors first
- If possible let paint dry before switching to the next color (should dry within 15 minutes to an hour)
 - ♦ get several pumpkins started at once

MARKER CLEANING OPTIONS:

- hold marker tip to scratch paper
 - gently squeeze marker while pushing tip to paper
 - paint will flow and push mixed paint out of tip
 - repeat as needed
- Run tip under water and work with finger
- Remove tip from marker using pliers. Rinse well.
- If tip dries out, rinse under warm water

WINDOW CLEANING:

With a warm, damp cloth or paper towel, gently scrub paint off window. Be careful not to drip on carpet or other stainable surfaces.

IMPORTANT INFORMATION:

- All Handy Art paints are water-based and non-toxic.
- Markers can be refilled! Simply remove tip from marker using pliers, refill bottle with quality Handy Art Tempera (or Washable Paint) leaving bottle neck empty, return tip to bottle. PAINT!
- Contact us for a list of Handy Art vendors in your area.



MFG. BY ROCK PAINT DISTRIBUTING CORP.

BOX 482, MILTON, WI 53563
(608) 868-6873